

GBC Cross Country

2024 CARNIVAL INFORMATION



Date: Tuesday 14th May

Venue: DG Stolz Sports Fields - Redeemer Lutheran College
21 Kelly Street, Burbank 4156 ([google map link](#))

Parking: School busses may enter the Stolz Sports Fields complex to drop off and collect students, however **all buses will need to park off site** - they will need to leave after student drop off.

Limited Spectator Parking is available inside the DG Stolz Sports Fields facility. Additional parking is available along either side of Kelly Street (entrance) and on Priestdale Road.

Competitors: Each school may enter up to **10** runners per race per age group. Nominations are due to Eddie by or later **5pm on Wednesday 8th May**

Course: Competitors will compete over 1km, 2km, 3km or 4km courses as per the schedule below. Course maps are also attached.

Officials: Each school is required to bring **2 x officials /course marshals** to be used on the day in addition to Team Managers & Head's of Sport. Morning Tea and Lunch will be provided to all school officials.

Officials will meet at 9am at the officials tent near the finish line for the event and safety briefing.

Timing: Event timing will be provided by Sports Event Services. On arrival, each competitor will receive their unique individual race bib. These will feature a digital recording chip attached and must not be bent or damaged in any way. Students to attach bib to front of singlet with pins supplied. Bibs to be returned at the conclusion of carnival.

Results: Individual race results will be available at the conclusion of each event on the GBC website.

Protests: Protests will be accepted only from the School Team Managers, not teachers or parents. They are to be in writing and handed to the event convenor within 5 minutes of completion of the event in question. The Event Convenor and Chief Official will adjudicate on all protests.

Shade: There is ample room on the grass hill overlooking the fields, and each school is encouraged to bring along their own shade tents (pegs are fine) on the day.

First Aid: First Aid attendants will be in place at the event. They will be located next to the finishing area plus on course (approx. half-way point)

Toilets: Student toilets are located either side of the changeroom and canteen building and will be clearly signed. Staff and Spectator toilets are located on the back, right hand side of the building (looking from the oval) and are clearly signed.

Catering: Lunch will be supplied for all school and event officials.

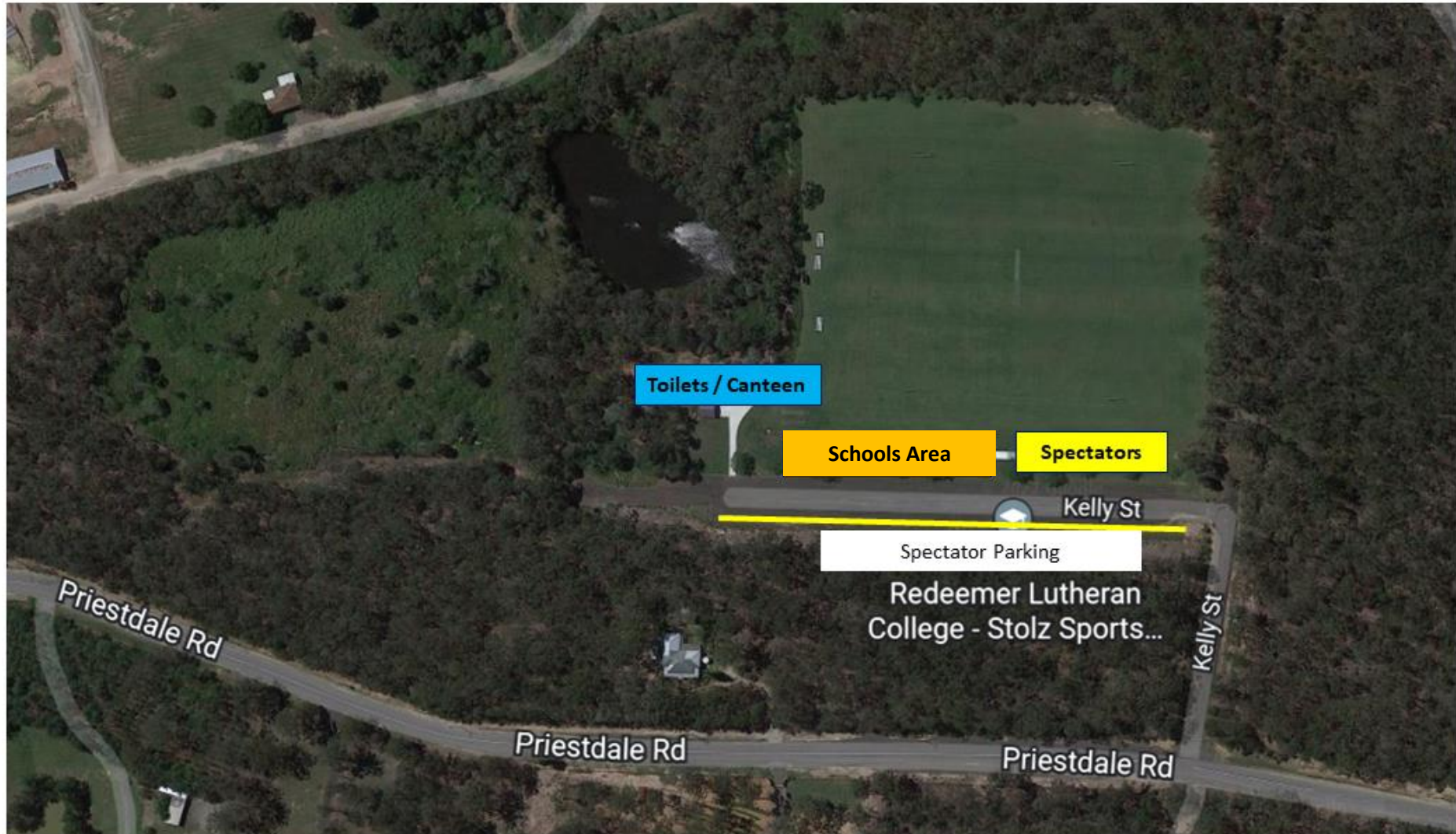
A BBQ & Canteen plus Coffee Van (tbc) will be available for students, staff and spectators to access throughout the day.

Schedule: Event Schedule is as follows:

8:30am	Arrive – Setup – Walk Course (course closes at 9:15am)
9:00am	Team Managers meeting
9:10am	Race Officials Briefing
9:20am	Race Officials move to checkpoints, start / finish areas
9:30am	9yr Girls= 1.0km (1 lap of small loop)
8:35am	9yr Boys = 1.0km (1 lap of small loop)
9:45am	10yr Girls = 2km (1 lap of big loop)
9:40am	10yr Boys = 2km (1 lap of big loop)
10:00am	11yr Girls = 2km (1 lap of big loop)
10:05am	11yr Boys = 2km (1 lap of big loop)
10:15am	12yr Girls = 3km (1 lap small loop first, plus 1 lap of big loop)
10:30am	12yr Boys = 3km (1 lap small loop first, plus 1 lap of big loop)
10:45am	13yr Girls = 3km (1 lap small loop first, plus 1 lap of big loop)
11:00am	13yr Boys = 3km (1 lap small loop first, plus 1 lap of big loop)
11:15am	14yr Girls = 3km (1 lap small loop first, plus 1 lap of big loop)
11:30am	14yr Boys = 4km (2 x laps of big loop)
11:45am	PRIMARY Relays 500m loop around oval
12:00pm	PRIMARY Presentations
12:00pm	15yr Girls = 4km (2 x laps of big loop)
12:15pm	15yr Boys = 4km (2 x laps of big loop)
12:30pm	16yr Girls = 4km (2 x laps of big loop)
12:45pm	16yr Boys = 4km (2 x laps of big loop)
1:00pm	Open Girls = 4km (2 x laps of big loop)
1:15pm	Open Boys = 4km (2 x laps of big loop)
1:45pm	SECONDARY Relays = 500m lap of sports fields
2:15pm	SECONDARY Presentations
2:30pm	Depart






DG Stolz Sports Fields – Facility Map:

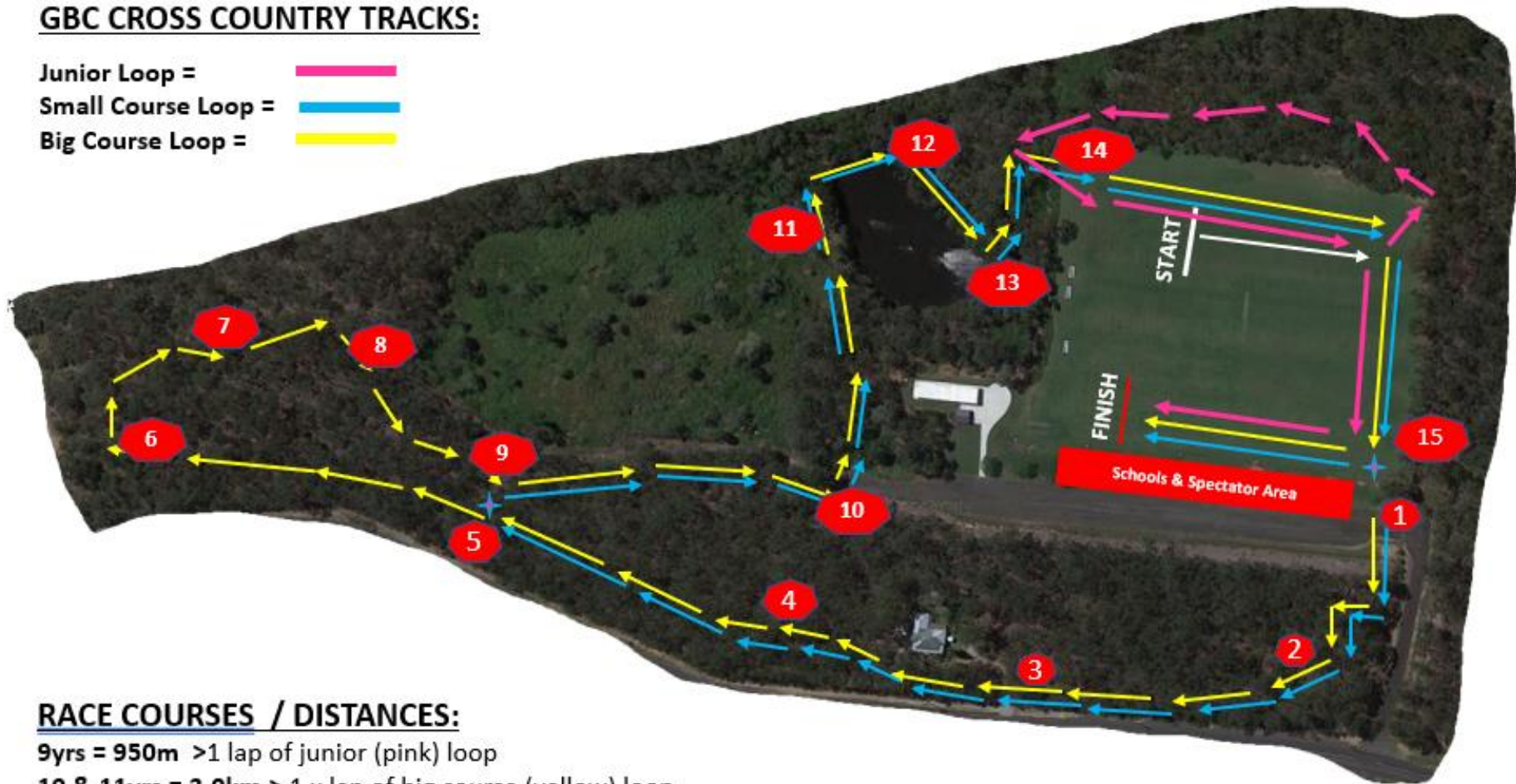


Redeemer Cross Country - Course Map 2024

DG Stolz Sports Fields, 21 Kelly Street Burbank (*enter off Priestdale Road)

GBC CROSS COUNTRY TRACKS:

Junior Loop = 
Small Course Loop = 
Big Course Loop = 



RACE COURSES / DISTANCES:

9yrs = 950m >1 lap of junior (pink) loop

10 & 11yrs = 2.0km > 1 x lap of big course (yellow) loop

12 & 13yrs +13yrs Girls = 3.0km > 1 lap of small course (blue) loop + 1 lap of big course (yellow) loop

14yrs Boys + 15yrs, 16yrs & Opens = 4.0km >2 laps big course (yellow) loop